

United Way



United Way  
of the Bluegrass

# WHAT YOUR DOLLAR DOES

Just a small amount can help make a **BIG impact** in the Bluegrass! When you give this amount per paycheck, here's what you're supporting...

## Basic Needs:

**\$4** provides basic needs like shelter, food, medical assistance and clothing to a child in need

**\$2** ensures an individual with substance abuse and/or mental health issues will have access to housing, addiction treatment and mental health services

**\$4** provides disaster-related assistance to an individual in need

## Financial Stability:

**\$2** Helps an unemployed individual secure a full-time job

**\$5** Provides free tax preparation services to a low-income individual

**\$6** Helps a low-income family obtain housing

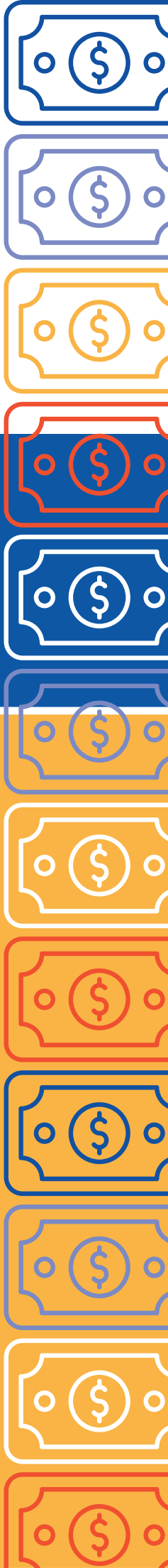
## Education:

**\$2** Purchases new pajamas, a book, a toothbrush and snacks for 2 children this holiday season

**\$3** Allows an elementary school student to participate in a program that includes tutoring, homework assistance and active coordination with the student's teachers

**\$2** Helps a low-income family place their child in a free-of-charge STARS-rated preschool program

**\$3** Matches a child with an adult mentor





United Way of the Bluegrass

# WHERE YOUR DOLLAR GOES

Follow the path of your dollar from **donation** through **impact** across the Bluegrass.



UNITED WAY COMMUNITY FUND

1



UNITED WAY COMMUNITY INITIATIVES



2



ALLOCATIONS COMMITTEE VOLUNTEERS



Review nonprofit partner applications and determine how to invest Community Fund donations to make the most impact/meet greatest needs in the community and submit recommendations to the Board

3



United Way Board of Directors review and approve funding recommendations

4



NONPROFIT PARTNER PROGRAMS  
Community fund donations invested locally into vital programs and services

5

## PEOPLE

IN OUR COMMUNITY  
get help with services to improve their quality of life



6

### THE RETURN ON YOUR INVESTMENT

Your gift helps create a stronger community where members can be self-sufficient



Kids achieve full potential



Community is stronger



People move from poverty to possibility

